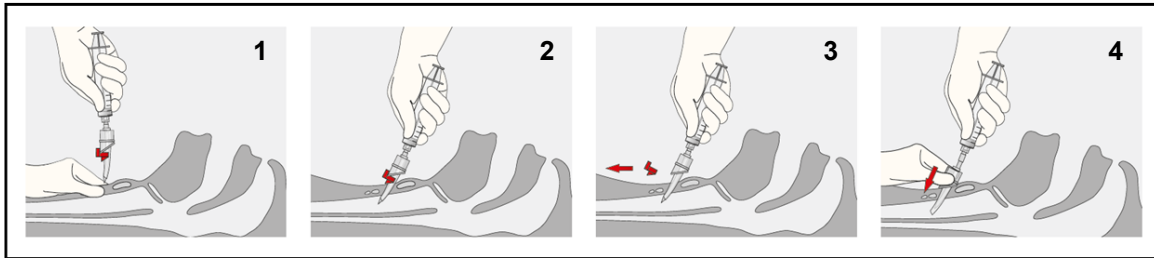


## Special Procedures

### S-04 Needle Cricothyrotomy



ALS Treatment

### Needle Cricothyrotomy Using Quicktrach or Other Approved Device

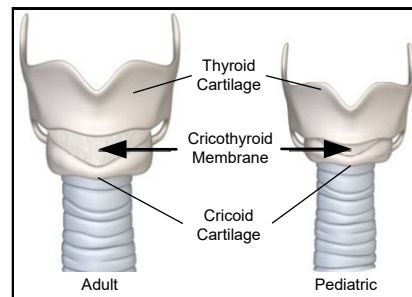
#### **INDICATIONS:**

- Severe upper airway obstruction
- CICO (Can't Intubate, Can't Oxygenate)

#### **CONTRAINDICATIONS:**

- Patient age < 3yo or estimated weight < 15kg
- Conscious or adequately ventilating patient

#### **PROCEDURE:**



#### **1. Insertion of needle and cannula:**

- a. Prepare all equipment prior to attempting procedure.
- b. Position patient supine, neck slightly extended if no c-spine injury is suspected.
- c. Palpate for the depression between the thyroid cartilage & the cricoid cartilage.
- d. Puncture skin & underlying cricothyroid membrane at a 90 degree angle.

#### **2. Advancement of needle and cannula:**

- a. Adjust the angle of the needle to 45 degrees with the tip towards patient's feet.
- b. Advance catheter and cannula while aspirating air with syringe until air return.

#### **3. Removal of safety stopper:**

- a. If device has a safety stopper, remove safety stopper from cannula.

#### **4. Final device placement:**

- a. While holding needle in position, advance cannula along needle until the flange is flush with the patient's neck.
- b. Remove needle while holding cannula in place.

#### **5. Ventilation, securing, and monitoring:**

- a. Ventilate patient with BVM via 15mm connector or flexible extension.
- b. Confirm proper placement in trachea and secure with neck strap or tape.
- c. Attach EtCO<sub>2</sub> adapter and continue ventilating with BVM.
- d. Monitor patient for signs of improvement along with SpO<sub>2</sub> and EtCO<sub>2</sub>.

